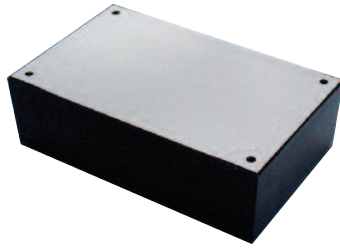


## ENCLOSURE PRODUCTS

### ALUMINUM TOP UTILITY CASES

- THE BEST VALUE UTILITY BOX IN A VARIETY OF SIZES
- HIGH IMPACT ABS
- ALUMINUM TOP



ITEM NO.	LENGTH	WIDTH	HEIGHT
64-8921	2.687	1.687	1.187
64-8922	3.937	2.125	1.375
64-8923	4.125	2.75	1.562
64-8924	5.25	3.25	1.562

\* BROKEN CARTON QUANTITIES AVAILABLE UPON REQUEST

### ALL PLASTIC UTILITY CASES WITH MOUNTING TABS

- THE BEST VALUE UTILITY BOX IN A VARIETY OF SIZES
- HIGH IMPACT ABS, UL 94HB FLAMMABILITY RATING
- ALL PLASTIC WITH MOUNTING TABS
- CARD GUIDES ACCEPT 1.6MM THICK CARD



ITEM NO.	LENGTH	WIDTH	HEIGHT
64-1020BF	3.23	2.11	1.18
64-1022BF	6.14	2.64	1.57
64-1024BF	7.31	3.75	2.08
64-1025BF	8.85	4.44	2.48

\* BROKEN CARTON QUANTITIES AVAILABLE UPON REQUEST

### UTILITY CASES

- FLAME RETARDANT ABS UL94-V0
- DESIGNED FOR ELECTRONIC PRODUCT USE

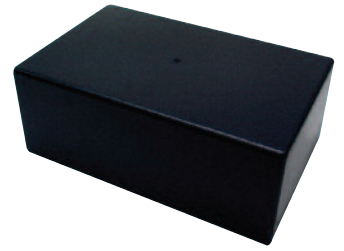


ITEM NO.	LENGTH	WIDTH	HEIGHT
64-G1906	2.74	1.99	.83
64-G1908	3.49	2.48	1.08
64-G1910	4.53	3.27	1.26

\* BROKEN CARTON QUANTITIES AVAILABLE UPON REQUEST

### ALL PLASTIC UTILITY CASES

- THE BEST VALUE UTILITY BOX IN A VARIETY OF SIZES
- HIGH IMPACT ABS, UL 94HB FLAMMABILITY RATING
- CARD GUIDES ACCEPT 1.6MM THICK CARD



ITEM NO.	LENGTH	WIDTH	HEIGHT
64-1031B	2.51	1.73	1.25
64-1032B	3.97	2.12	1.72
64-1033B	5.07	2.51	1.73
64-1034B	5.94	3.54	2.09
64-1037B	7.44	4.44	2.62
64-1039B	8.54	5.43	3.23

\* BROKEN CARTON QUANTITIES AVAILABLE UPON REQUEST

### DESKTOP PLASTIC CASES

- DESKTOP ABS INSTRUMENT CASES WITH MOLDED PCB STAND-OFFS, VERTICAL CARD GUIDES AND BRASS INSERTS FOR REPETITIVE ASSEMBLY OR DISASSEMBLY
- (4) M3 SCREWS AND RUBBER FEET ARE PROVIDED
- LIGHT GRAY TOP AND BASE WITH BLACK PANELS



ITEM NO.	LENGTH	WIDTH	HEIGHT
64-G738	5.51	4.33	1.377
64-G747	8.85	6.5	1.57
64-G748	8.85	6.5	2.56
64-G749	8.85	6.5	3.54

\* BROKEN CARTON QUANTITIES AVAILABLE UPON REQUEST



**SLOPED HAND-HELD ENCLOSURE**

- MOLDED IN HIGH IMPACT ABS PLASTIC
- IDEAL FOR KEYBOARD, CONTROLLERS, TEST INSTRUMENT, COMPUTER ACCESSORIES, REMOTE ACTUATORS AND CONTROLS

ITEM NO.	LENGTH	WIDTH	HEIGHT
64-G1168B	5.9	3.74	1.22/1.95
64-G1189B	7.45	4.15	1.30/2.32

\* BROKEN CARTON QUANTITIES AVAILABLE UPON REQUEST



**SNAP-IN PLASTIC CASE WITH HINGED COVER**

- HIGH IMPACT UL94-HB ABS
- BLACK COLOR
- SNAP-IN DESIGN CAN BE OPENED AND CLOSED EASILY WITHOUT A TOOL
- RUBBER INSERT FOR OUTLET CABLE
- IDEAL FOR INDOOR/OUTDOOR APPLICATIONS

ITEM NO.	LENGTH	WIDTH	HEIGHT
64-GH001B	3.58	3.11	1.17

\* BROKEN CARTON QUANTITIES AVAILABLE UPON REQUEST

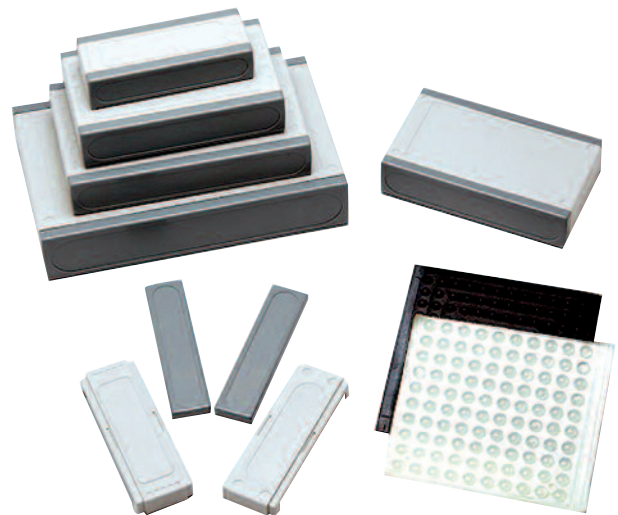


**FLANGED ALUMINUM CASES**

- DIE CAST ALUMINUM ALLOY ADC-12 TO JAPAN (JIS)
- NATURAL DIE CAST ALUMINUM FINISH
- ON THE BODY ARE PRE-DRILLED TAPPED HOLES AND STAINLESS STEEL SCREWS ARE PROVIDED TO HOLD THE BODY AND LID FIRMLY IN PLACE
- IP 66 RATING WITH ADHESIVE GASKET

ITEM NO.	LENGTH	WIDTH	HEIGHT
64-BS11MF	8.74	5.75	2.16
64-BS13MF	4.49	2.52	1.18
64-BS15MF	4.49	2.52	2.16
64-BS25MF	4.49	3.45	2.16
64-BS39MF	6.73	4.76	4.17

\* BROKEN CARTON QUANTITIES AVAILABLE UPON REQUEST



**SNAP-IN PLASTIC CASES**

- HIGH IMPACT UL- 94-HB ABS
- LID & BASE ARE MOLDED IN LIGHT GREY COLOR , FRONT & END PANELS ARE MOLDED IN DARK GREY COLOR
- SNAP-IN TYPE DESIGN TO SAVE TIME IN PRODUCT ASSEMBLY

ITEM NO.	LENGTH	WIDTH	HEIGHT
64-G1812	4.13	1.6	.992
64-G1814	5.12	2.92	1.18
64-G1816	6.1	3.62	1.16
64-G1818	7.875	4.76	1.57

\* BROKEN CARTON QUANTITIES AVAILABLE UPON REQUEST