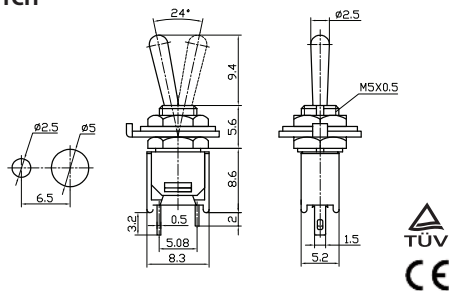
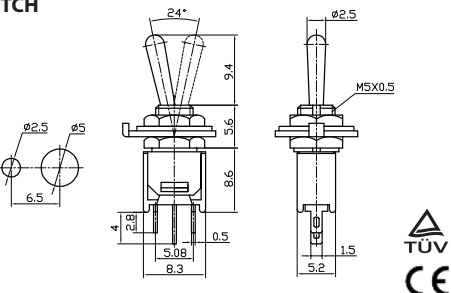


SUB-MINI TOGGLE SWITCH



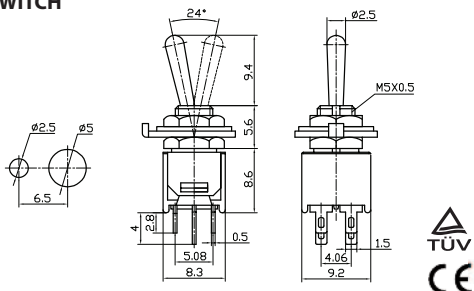
PART #	DESCRIPTION	RATING A	RATING B
66-1001	ON-OFF/SPST 2P	3 AMPS/125 VAC	1.0 AMPS/250 VAC

SUB-MINI TOGGLE SWITCH



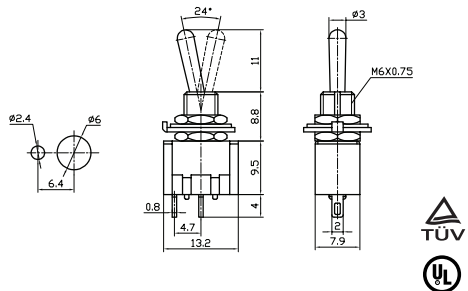
PART #	DESCRIPTION	RATING A	RATING B
66-1002	ON-ON/SPDT 3P	3 AMPS/125 VAC	1.0 AMPS/250 VAC
66-1003	ON-OFF-ON/SPDT 3P	3 AMPS/125 VAC	1.0 AMPS/250 VAC

SUB-MINI TOGGLE SWITCH



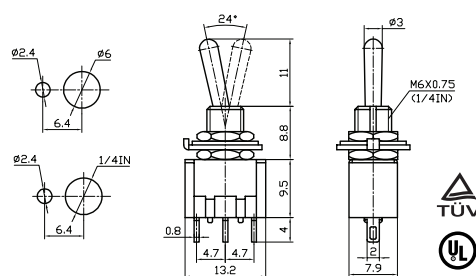
PART #	DESCRIPTION	RATING A	RATING B
66-1005	ON-ON/DPDT 6P	3 AMPS/125 VAC	1.0 AMPS/250 VAC
66-1006	ON-OFF-ON/DPDT 6P	3 AMPS/125 VAC	1.0 AMPS/250 VAC

MINI TOGGLE SWITCH



PART #	DESCRIPTION	RATING A	RATING B
66-1201	ON-OFF/SPST 2P	6 AMPS/125 VAC	3 AMPS/250 VAC

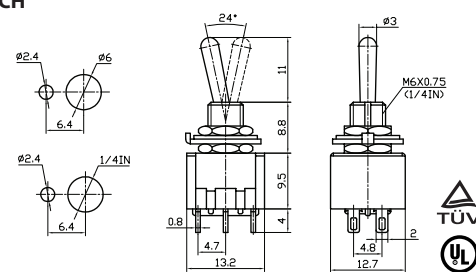
MINI TOGGLE SWITCH



(ON) = Momentary

PART #	DESCRIPTION	RATING A	RATING B
66-1202	ON-ON/SPDT 3P	6 AMPS/125 VAC	3 AMPS/250 VAC
66-1203	ON-OFF-ON/SPDT 3P	6 AMPS/125 VAC	3 AMPS/250 VAC
66-1250	(ON)-OFF-(ON)/SPDT 3P	6 AMPS/125 VAC	3 AMPS/250 VAC

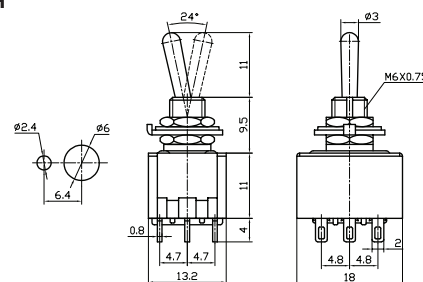
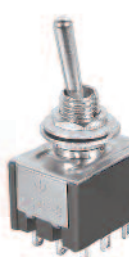
MINI TOGGLE SWITCH



(ON) = Momentary

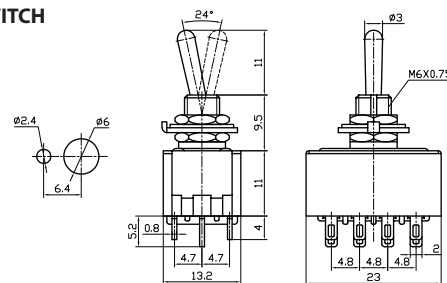
PART #	DESCRIPTION	RATING A	RATING B
66-1205	ON-ON/DPDT 6P	6 AMPS/125 VAC	3 AMPS/250 VAC
66-1206	ON-OFF-ON/DPDT 6P	6 AMPS/125 VAC	3 AMPS/250 VAC
66-1251	(ON)-OFF-(ON)/DPDT 6P	6 AMPS/125 VAC	3 AMPS/250 VAC
66-1255	ON-OFF-(ON)/DPDT 6P	6 AMPS/125 VAC	3 AMPS/250 VAC

MINI TOGGLE SWITCH



PART #	DESCRIPTION	RATING A	RATING B
66-1210	ON-ON/3PDT 9P	6 AMPS/125 VAC	3 AMPS/250 VAC
66-1215	ON-OFF-ON/3PDT 9P	6 AMPS/125 VAC	3 AMPS/250 VAC

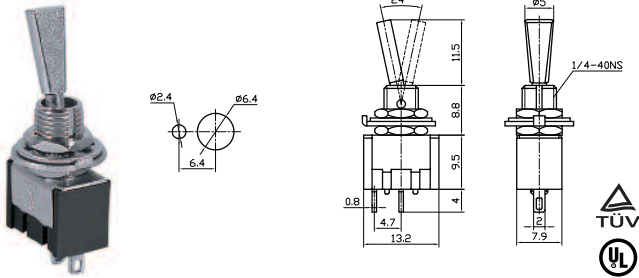
MINI TOGGLE SWITCH



PART #	DESCRIPTION	RATING A	RATING B
66-1220	ON-ON/4PDT 12P	6 AMPS/125 VAC	3 AMPS/250 VAC

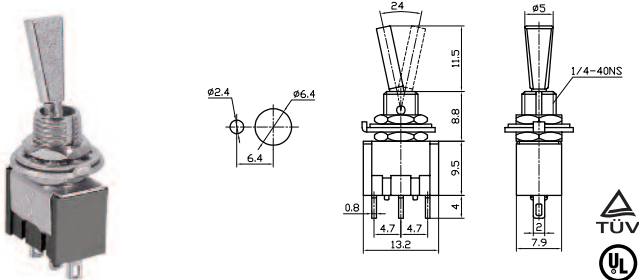
SWITCHES

MINI TOGGLE SWITCH



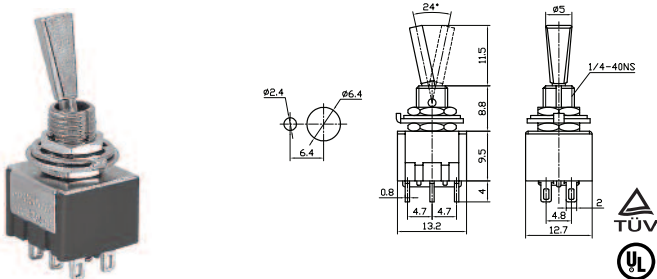
PART #	DESCRIPTION	RATING A	RATING B
66-1225	ON-OFF/SPST 2P	6 AMPS/125 VAC	3 AMPS/250 VAC

MINI TOGGLE SWITCH



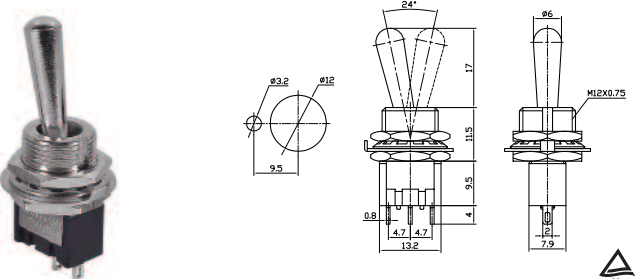
PART #	DESCRIPTION	RATING A	RATING B
66-1226	ON-ON/SPDT 3P	6 AMPS/125 VAC	3 AMPS/250 VAC
66-1227	ON-OFF-ON/SPDT 3P	6 AMPS/125 VAC	3 AMPS/250 VAC

MINI TOGGLE SWITCH



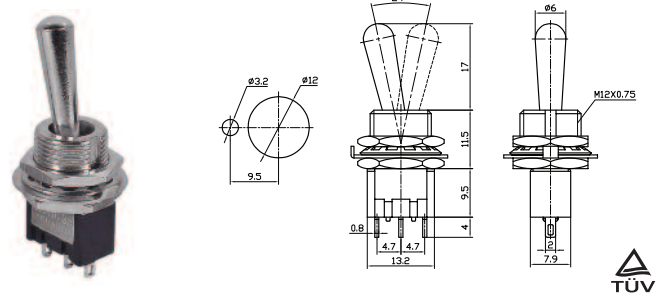
PART #	DESCRIPTION	RATING A	RATING B
66-1228	ON-ON/DPDT 6P	6 AMPS/125 VAC	3 AMPS/250 VAC
66-1229	ON-OFF-ON/DPDT 6P	6 AMPS/125 VAC	3 AMPS/250 VAC

MINI TOGGLE SWITCH



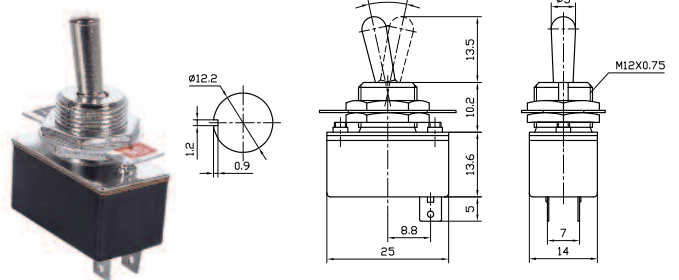
PART #	DESCRIPTION	RATING A	RATING B
66-1230	ON-OFF/SPST 2P	6 AMPS/125 VAC	3 AMPS/250 VAC

MINI TOGGLE SWITCH



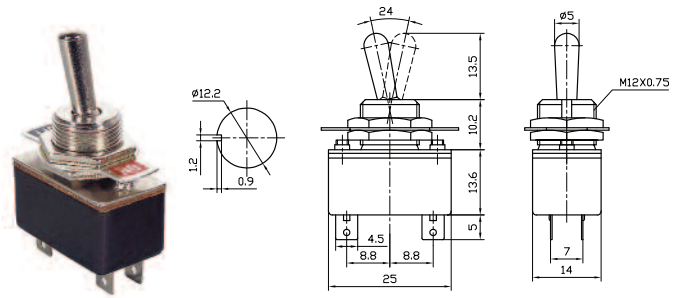
PART #	DESCRIPTION	RATING A	RATING B
66-1231	ON-ON/SPDT 3P	6 AMPS/125 VAC	3 AMPS/250 VAC
66-1232	ON-OFF-ON/SPDT 3P	6 AMPS/125 VAC	3 AMPS/250 VAC

STANDARD DUTY TOGGLE SWITCH



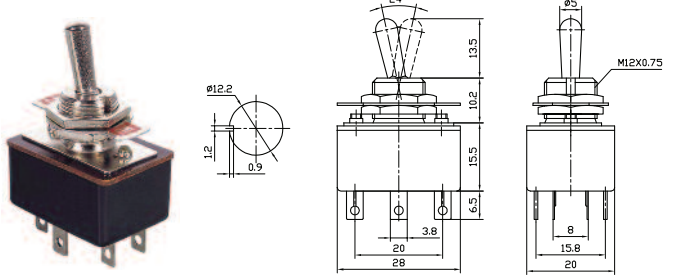
PART #	DESCRIPTION	RATING A	RATING B
66-1401	ON-OFF/SPST 2P	4 AMPS/125 VAC	2 AMPS/250 VAC
66-1501	ON-OFF/SPST 2P Pre-wired	4 AMPS/125 VAC	2 AMPS/250 VAC

STANDARD DUTY TOGGLE SWITCH



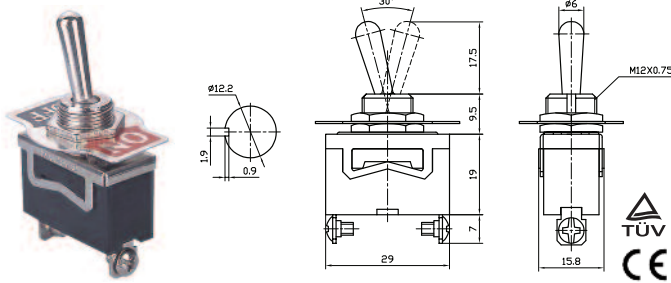
PART #	DESCRIPTION	RATING A	RATING B
66-1402	ON-ON/SPDT 4P	4 AMPS/125 VAC	2 AMPS/250 VAC

STANDARD DUTY TOGGLE SWITCH



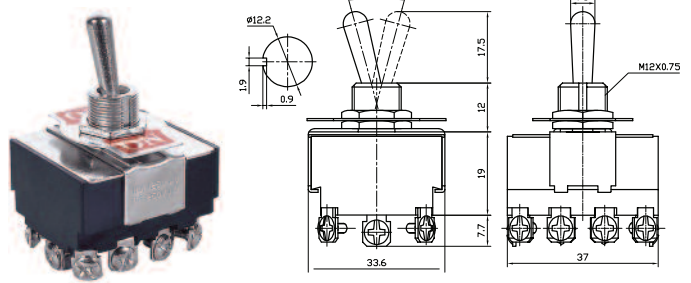
PART #	DESCRIPTION	RATING A	RATING B
66-1405	ON-ON/DPDT 6P	5 AMPS/125 VAC	3 AMPS/250 VAC

MEDIUM DUTY TOGGLE SWITCH



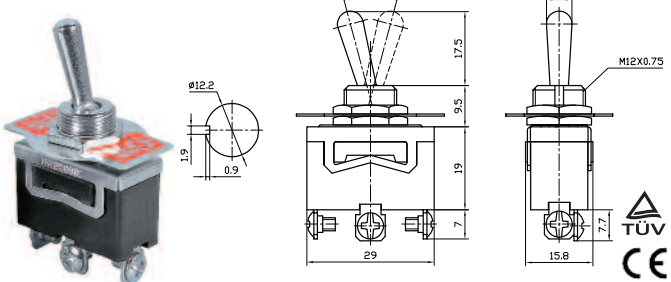
PART #	DESCRIPTION	RATING A	RATING B
66-1620	ON-OFF/SPST 2P	10 AMPS/125 VAC	6 AMPS/250 VAC

HEAVY DUTY TOGGLE SWITCH



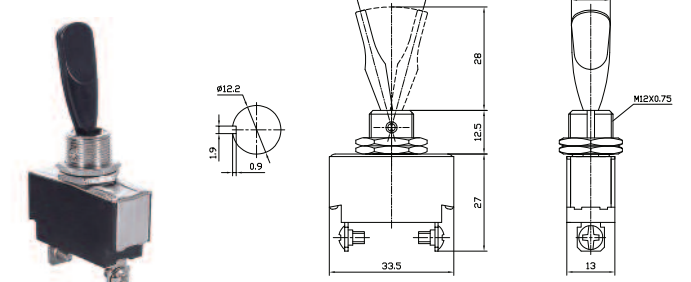
PART #	DESCRIPTION	RATING A	RATING B
66-1811	ON-ON/4PDT 12P	15 AMPS/125 VAC	10 AMPS/250 VAC
66-1815	ON-OFF-ON/4PDT 12P	15 AMPS/125 VAC	10 AMPS/250 VAC

MEDIUM DUTY TOGGLE SWITCH



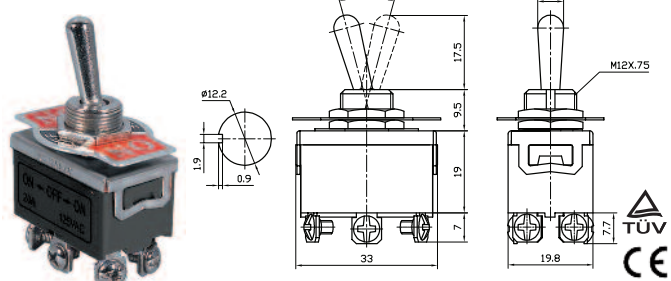
PART #	DESCRIPTION	RATING A	RATING B
66-1621	ON-ON/SPDT 3P	10 AMPS/125 VAC	6 AMPS/250 VAC
66-1622	ON-OFF-ON/SPDT 3P	10 AMPS/125 VAC	6 AMPS/250 VAC

HEAVY DUTY TOGGLE SWITCH



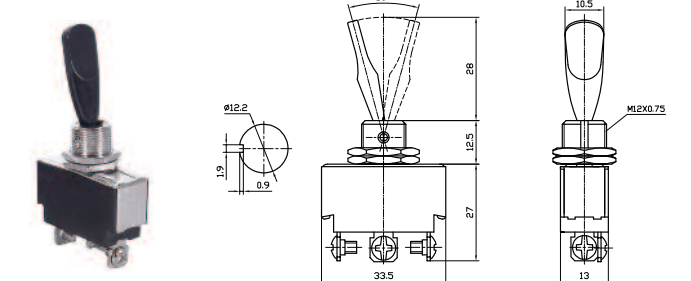
PART #	DESCRIPTION	RATING A	RATING B
66-1820	ON-OFF/SPST 2P	15 AMPS/125 VAC	10 AMPS/250 VAC

MEDIUM DUTY TOGGLE SWITCH



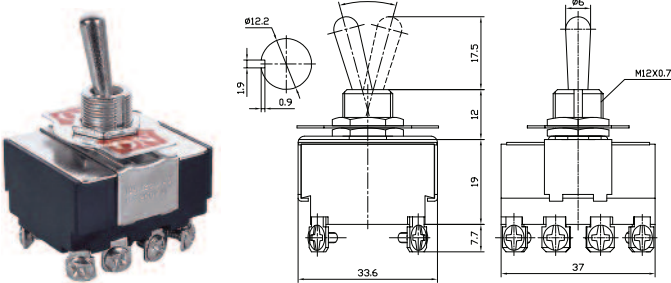
PART #	DESCRIPTION	RATING A	RATING B
66-1623	ON-ON/DPDT 6P	10 AMPS/125 VAC	6 AMPS/250 VAC
66-1624	ON-OFF-ON/DPDT 6P	10 AMPS/125 VAC	6 AMPS/250 VAC

HEAVY DUTY TOGGLE SWITCH



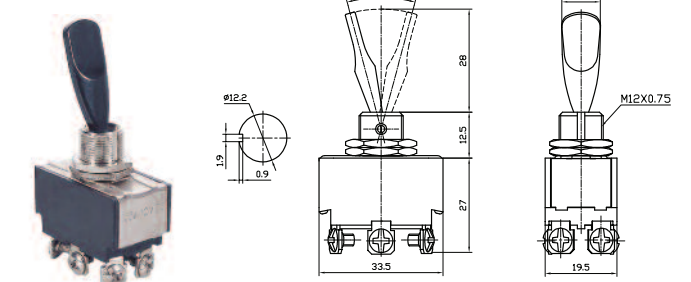
PART #	DESCRIPTION	RATING A	RATING B
66-1821	ON-ON/SPDT 3P	15 AMPS/125 VAC	10 AMPS/250 VAC
66-1822	ON-OFF-ON/SPDT 3P	15 AMPS/125 VAC	10 AMPS/250 VAC

HEAVY DUTY TOGGLE SWITCH



PART #	DESCRIPTION	RATING A	RATING B
66-1810	ON-OFF/4PST 8P	15 AMPS/125 VAC	10 AMPS/250 VAC

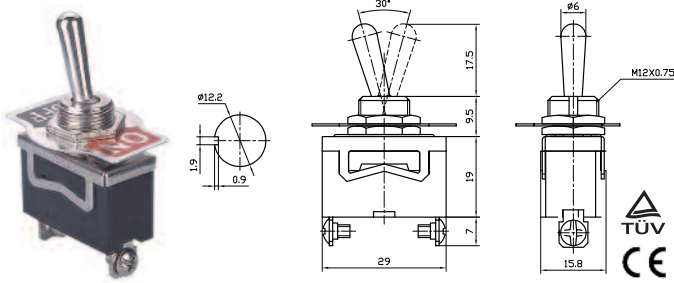
HEAVY DUTY TOGGLE SWITCH



PART #	DESCRIPTION	RATING A	RATING B
66-1823	ON-ON/DPDT 6P	15 AMPS/125 VAC	10 AMPS/250 VAC
66-1824	ON-OFF-ON/DPDT 6P	15 AMPS/125 VAC	10 AMPS/250 VAC

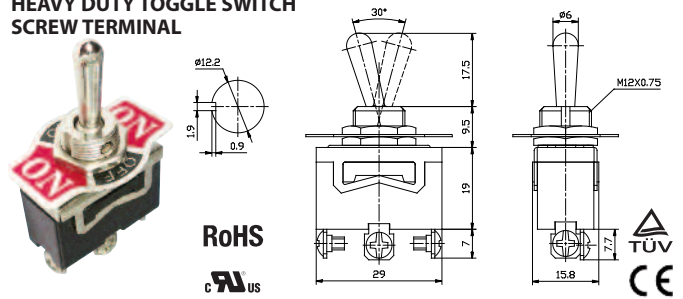
SWITCHES

HEAVY DUTY TOGGLE SWITCH



PART #	DESCRIPTION	RATING A	RATING B
66-1801	ON-OFF/SPST 2P	20 AMPS/125 VAC	15 AMPS/250 VAC

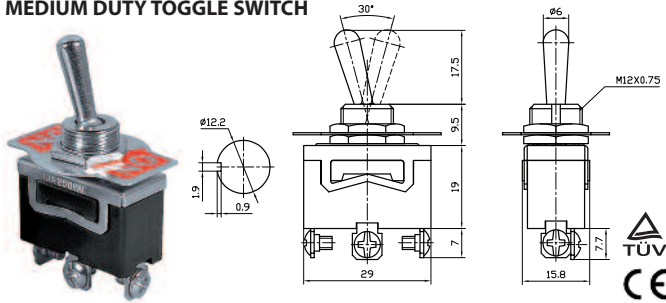
HEAVY DUTY TOGGLE SWITCH SCREW TERMINAL



(ON) = Momentary

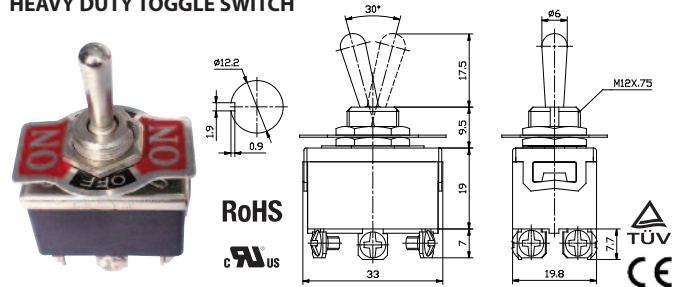
PART #	DESCRIPTION	RATING A	RATING B
66-1850	(ON)-OFF-(ON)/SPDT 3P	20 AMPS/125 VAC	15 AMPS/250 VAC

MEDIUM DUTY TOGGLE SWITCH



PART #	DESCRIPTION	RATING A	RATING B
66-1802	ON-ON/SPDT 3P	20 AMPS/125 VAC	15 AMPS/250 VAC
66-1803	ON-OFF-ON/SPDT 3P	20 AMPS/125 VAC	15 AMPS/250 VAC

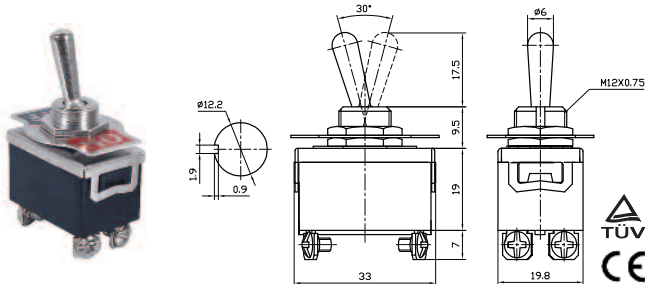
HEAVY DUTY TOGGLE SWITCH



(ON) = Momentary

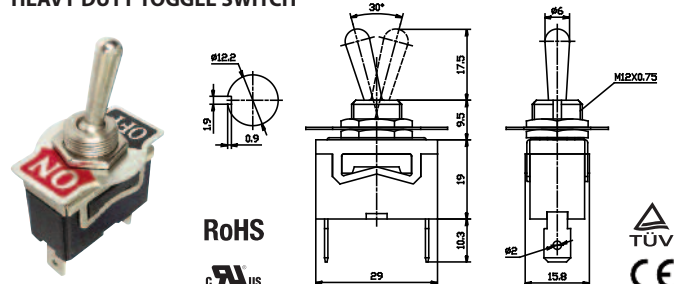
PART #	DESCRIPTION	RATING A	RATING B
66-1851	(ON)-OFF-(ON)/DPDT 6P	20 AMPS/125 VAC	15 AMPS/250 VAC
66-1855	ON-OFF-(ON)/DPDT 6P	20 AMPS/125 VAC	15 AMPS/250 VAC

HEAVY DUTY TOGGLE SWITCH



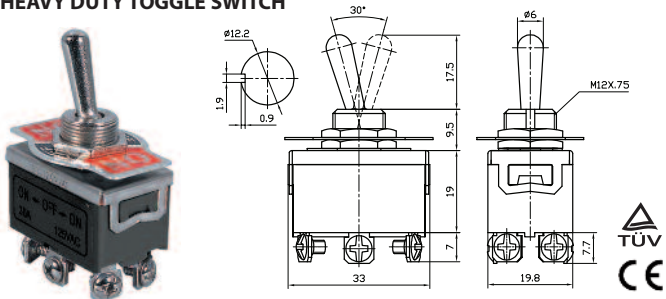
PART #	DESCRIPTION	RATING A	RATING B
66-1804	ON-OFF/DPST 4P	20 AMPS/125 VAC	15 AMPS/250 VAC

HEAVY DUTY TOGGLE SWITCH



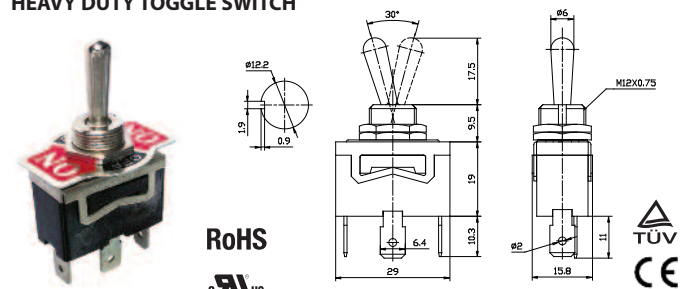
PART #	DESCRIPTION	RATING A	RATING B
66-1901	ON-OFF/SPST 2P	20 AMPS/125 VAC	15 AMPS/250 VAC

HEAVY DUTY TOGGLE SWITCH



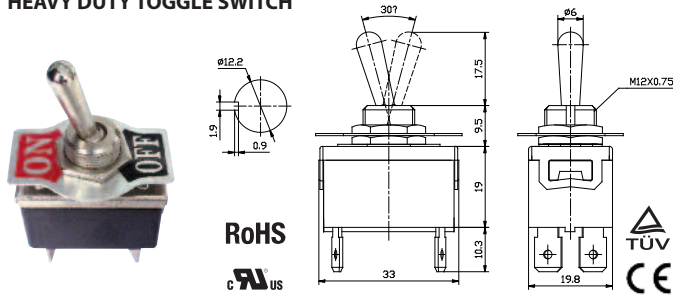
PART #	DESCRIPTION	RATING A	RATING B
66-1805	ON-ON/DPDT 6P	20 AMPS/125 VAC	15 AMPS/250 VAC
66-1806	ON-OFF-ON/DPDT 6P	20 AMPS/125 VAC	15 AMPS/250 VAC

HEAVY DUTY TOGGLE SWITCH



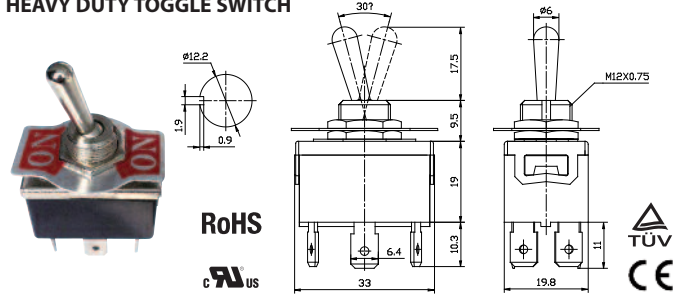
PART #	DESCRIPTION	RATING A	RATING B
66-1902	ON-ON/SPDT 3P	20 AMPS/125 VAC	15 AMPS/250 VAC
66-1903	ON-OFF-ON/SPDT 3P	20 AMPS/125 VAC	15 AMPS/250 VAC

HEAVY DUTY TOGGLE SWITCH



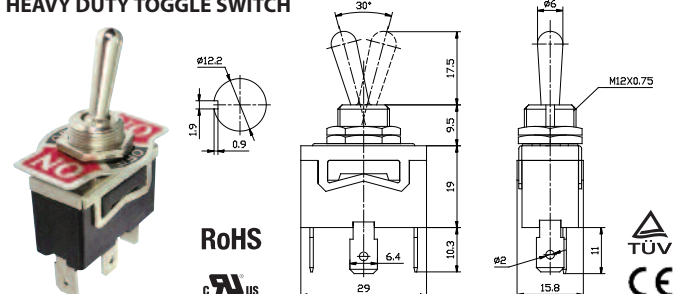
PART #	DESCRIPTION	RATING A	RATING B
66-1904	ON-OFF/DPST 4P	20 AMPS/125 VAC	15 AMPS/250 VAC

HEAVY DUTY TOGGLE SWITCH



PART #	DESCRIPTION	RATING A	RATING B
66-1905	ON-ON/DPDT 6P	20 AMPS/125 VAC	15 AMPS/250 VAC
66-1906	ON-OFF-ON/DPDT 6P	20 AMPS/125 VAC	15 AMPS/250 VAC

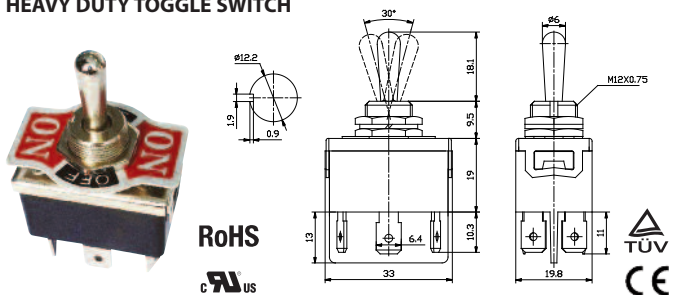
HEAVY DUTY TOGGLE SWITCH



(ON) = Momentary

PART #	DESCRIPTION	RATING A	RATING B
66-1950	(ON)-OFF-(ON)/SPDT 3P	20 AMPS/125 VAC	15 AMPS/250 VAC

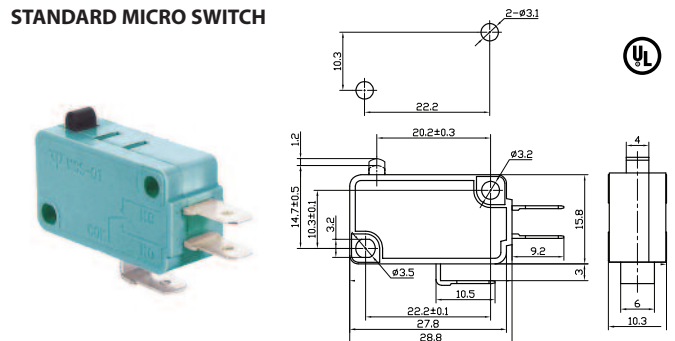
HEAVY DUTY TOGGLE SWITCH



(ON) = Momentary

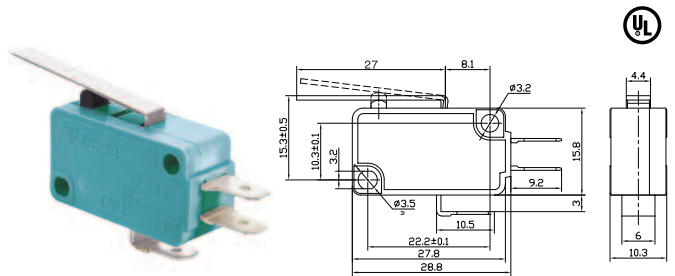
PART #	DESCRIPTION	RATING A	RATING B
66-1951	(ON)-OFF-(ON)/DPDT 3P	20 AMPS/125 VAC	15 AMPS/250 VAC
66-1955	ON-OFF-(ON)/DPDT 3P	20 AMPS/125 VAC	15 AMPS/250 VAC

STANDARD MICRO SWITCH



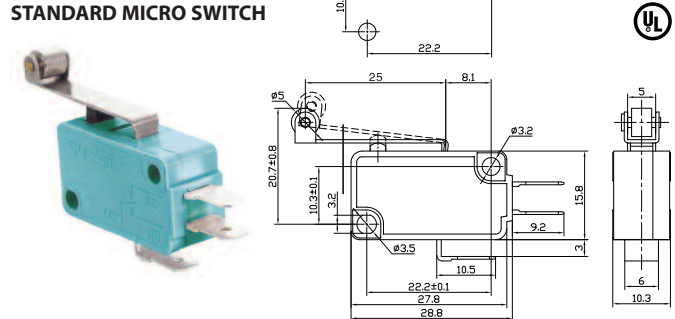
PART #	DESCRIPTION	RATING A	RATING B
66-4000	ON-(ON)/NO/NC 3P	10 AMPS/125 VAC	10 AMPS/250 VAC

STANDARD MICRO SWITCH



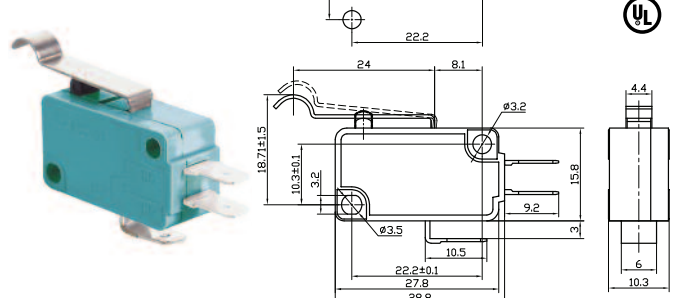
PART #	DESCRIPTION	RATING A	RATING B
66-4001	ON-(ON)/NO/NC 3P	10 AMPS/125 VAC	10 AMPS/250 VAC

STANDARD MICRO SWITCH



PART #	DESCRIPTION	RATING A	RATING B
66-4002	ON-(ON)/NO/NC 3P	10 AMPS/125 VAC	10 AMPS/250 VAC

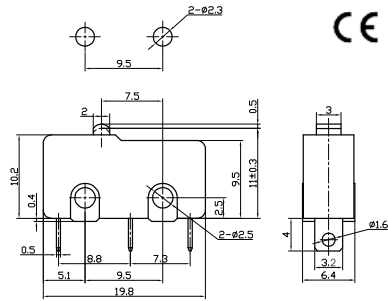
STANDARD MICRO SWITCH



PART #	DESCRIPTION	RATING A	RATING B
66-4003	ON-(ON)/NO/NC 3P	10 AMPS/125 VAC	10 AMPS/250 VAC

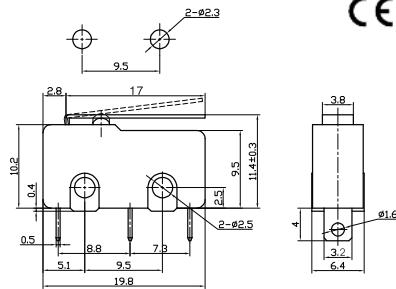
SWITCHES

MINI MICRO SWITCH



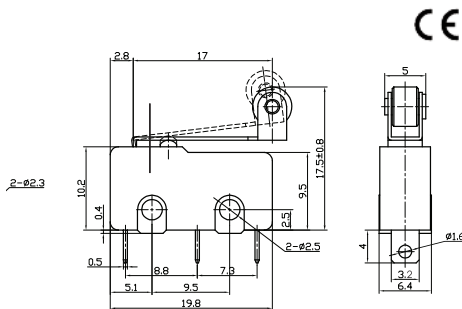
PART #	DESCRIPTION	RATING A	RATING B
66-4010	ON-(ON)/NO/NC 3P	5 AMPS/125 VAC	5 AMPS/250 VAC

MINI MICRO SWITCH



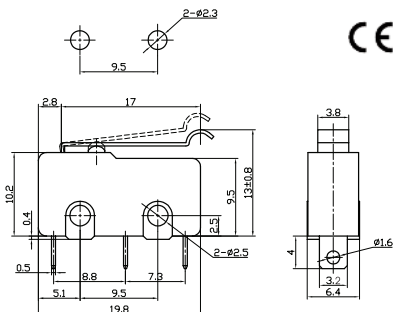
PART #	DESCRIPTION	RATING A	RATING B
66-4011	ON-(ON)/NO/NC 3P	5 AMPS/125 VAC	5 AMPS/250 VAC

MINI MICRO SWITCH



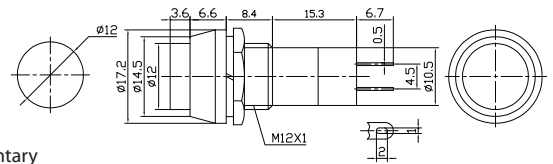
PART #	DESCRIPTION	RATING A	RATING B
66-4012	ON-(ON)/NO/NC 3P	5 AMPS/125 VAC	5 AMPS/250 VAC

MINI MICRO SWITCH



PART #	DESCRIPTION	RATING A	RATING B
66-4013	ON-(ON)/NO/NC 3P	5 AMPS/125 VAC	5 AMPS/250 VAC

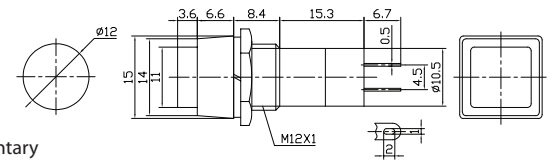
PUSH BUTTON SWITCH



(ON) = Momentary

PART #	DESCRIPTION	RATING A	RATING B
66-2445	ON-OFF/SPST 2P	3 AMPS/125 VAC	1 AMPS/250 VAC
66-2446	OFF-(ON)/SPST 2P	3 AMPS/125 VAC	1 AMPS/250 VAC

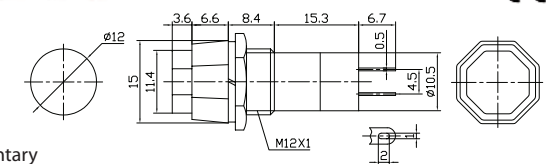
PUSH BUTTON SWITCH



(ON) = Momentary

PART #	DESCRIPTION	RATING A	RATING B
66-2402	ON-OFF/SPST 2P	3 AMPS/125 VAC	1 AMPS/250 VAC
66-2404	OFF-(ON)/SPST 2P	3 AMPS/125 VAC	1 AMPS/250 VAC

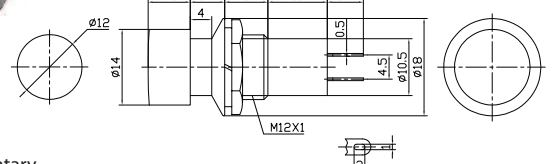
PUSH BUTTON SWITCH



(ON) = Momentary

PART #	DESCRIPTION	RATING A	RATING B
66-2450	ON-OFF/SPST 2P	3 AMPS/125 VAC	1 AMPS/250 VAC
66-2451	OFF-(ON)/SPST 2P	3 AMPS/125 VAC	1 AMPS/250 VAC

PUSH BUTTON SWITCH

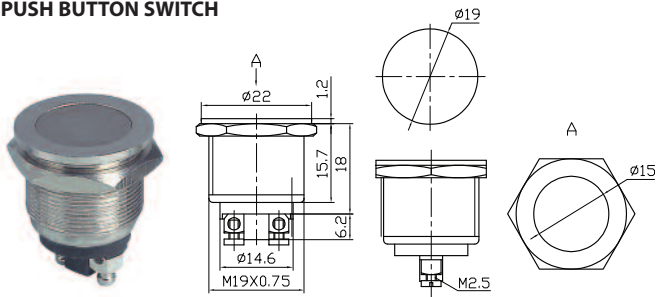


(ON) = Momentary

PART #	DESCRIPTION	RATING A	RATING B
66-2406	BLACK ON-OFF/SPST 2P	3 AMPS/125 VAC	1 AMPS/250 VAC
66-2407	BLACK OFF-(ON)/SPST 2P	3 AMPS/125 VAC	1 AMPS/250 VAC
66-2408	RED ON-OFF/SPST 2P	3 AMPS/125 VAC	1 AMPS/250 VAC
66-2410	RED OFF-(ON)/SPST 2P	3 AMPS/125 VAC	1 AMPS/250 VAC

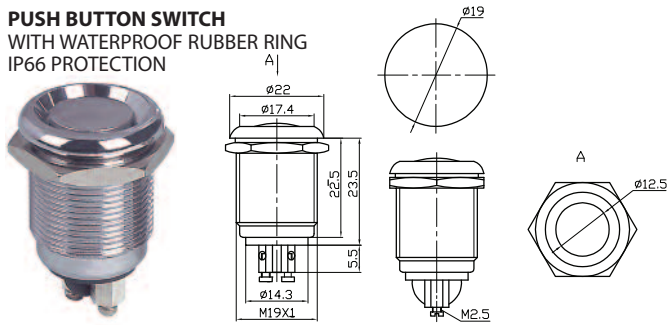
SWITCHES

PUSH BUTTON SWITCH



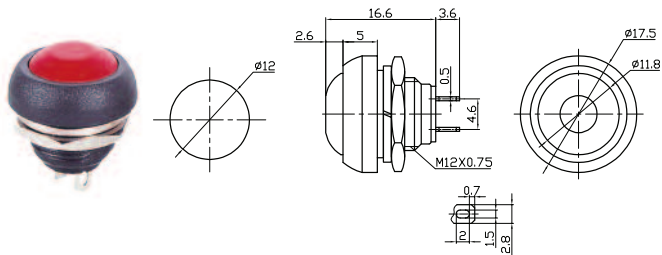
PART #	DESCRIPTION	RATING A	RATING B
66-2436	OFF-(ON)/SPST 2P	4 AMPS/125 VAC	2 AMPS/250 VAC

PUSH BUTTON SWITCH WITH WATERPROOF RUBBER RING IP66 PROTECTION



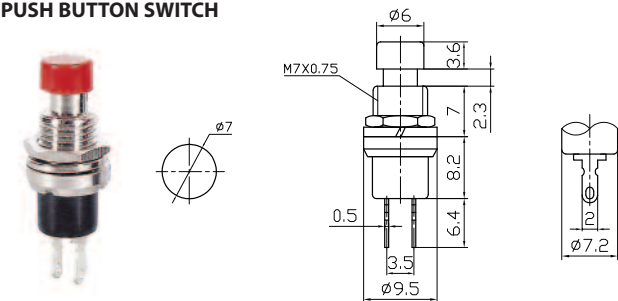
PART #	DESCRIPTION	RATING A	RATING B
66-2438	OFF-(ON)/SPST 2P/IP66	4 AMPS/125 VAC	2 AMPS/250 VAC

PUSH BUTTON SWITCH



PART #	DESCRIPTION	RATING A	RATING B
66-2440 BK	OFF-(ON)/SPST 2P	3 AMPS/125 VAC	1 AMP/250 VAC
66-2441 RED	OFF-(ON)/SPST 2P	3 AMPS/125 VAC	1 AMP/250 VAC
66-2442 BLU	OFF-(ON)/SPST 2P	3 AMPS/125 VAC	1 AMP/250 VAC
66-2443 GN	OFF-(ON)/SPST 2P	3 AMPS/125 VAC	1 AMP/250 VAC
66-2444 YW	OFF-(ON)/SPST 2P	3 AMPS/125 VAC	1 AMP/250 VAC

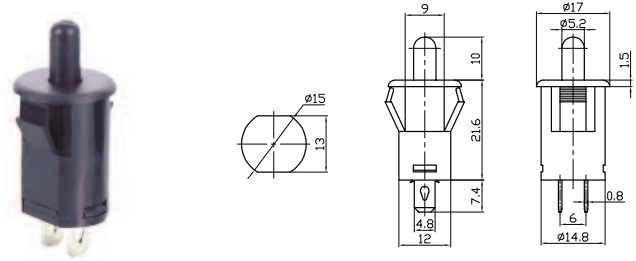
PUSH BUTTON SWITCH



* BLACK BUTTON

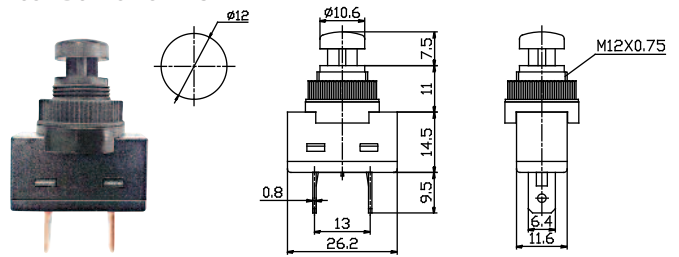
PART #	DESCRIPTION	RATING A	RATING B
66-2412	OFF-(ON)/SPST 2P	3 AMPS/125 VAC	1 AMPS/250 VAC
66-2414*	ON-(OFF)/SPST 2P	3 AMPS/125 VAC	1 AMPS/250 VAC

PUSH BUTTON SWITCH



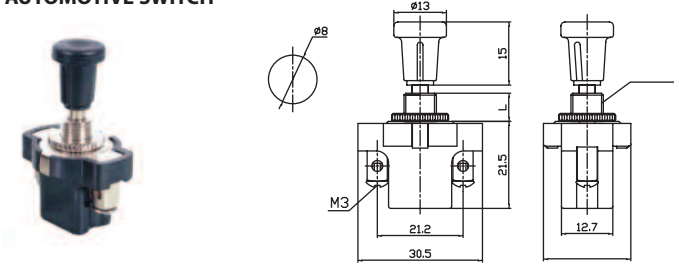
PART #	DESCRIPTION	RATING A	RATING B
66-2475	OFF-(ON)/SPST 2P	3 AMPS/125 VAC	1 AMPS/250 VAC

PUSH BUTTON SWITCH



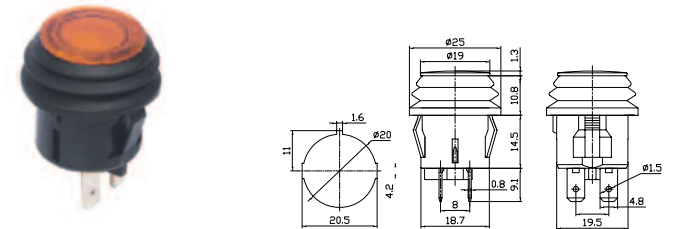
PART #	DESCRIPTION	RATING A	RATING B
66-2468	(ON)-OFF	20 AMPS/12 VDC	10 AMPS/125 VAC

AUTOMOTIVE SWITCH



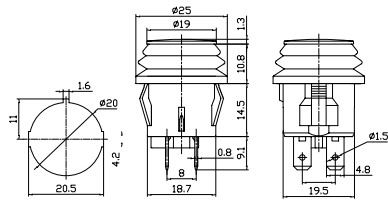
PART #	DESCRIPTION	RATING A	RATING B
66-2301	(L=7,13,20) SPST 2P	10AMPS/12VDC	6 AMPS/30 VDC

AUTOMOTIVE SWITCH



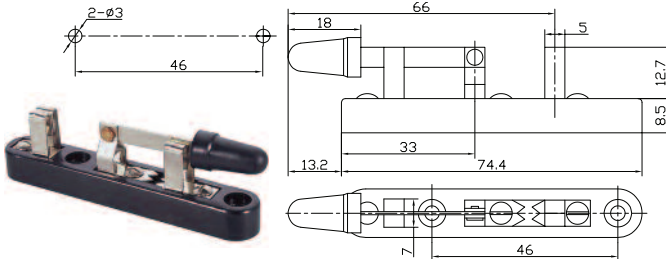
PART #	DESCRIPTION	RATING A	RATING B
66-2490 RED	ON-OFF	20 AMPS/12VDC	-
66-2491 BLUE	ON-OFF	20 AMPS/12VDC	-
66-2492 GREEN	ON-OFF	20 AMPS/12VDC	-
66-2493 AMBER	ON-OFF	20 AMPS/12VDC	-

AUTOMOTIVE SWITCH



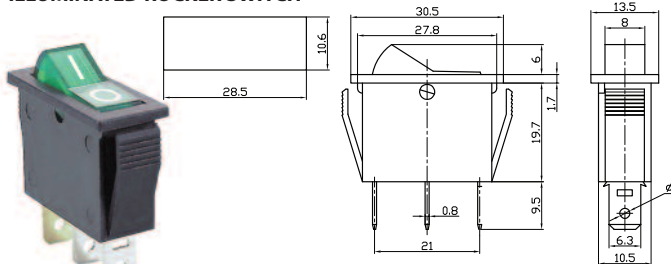
PART #	DESC.	RATING A	RATING B
66-2495 RED	ON-OFF	10 AMPS/110VAC	6 AMPS/250VAC
66-2496 BLUE	ON-OFF	10 AMPS/110VAC	6 AMPS/250VAC
66-2497 GREEN	ON-OFF	10 AMPS/110VAC	6 AMPS/250VAC
66-2498 AMBER	ON-OFF	10 AMPS/110VAC	6 AMPS/250VAC

KNIFE SWITCH



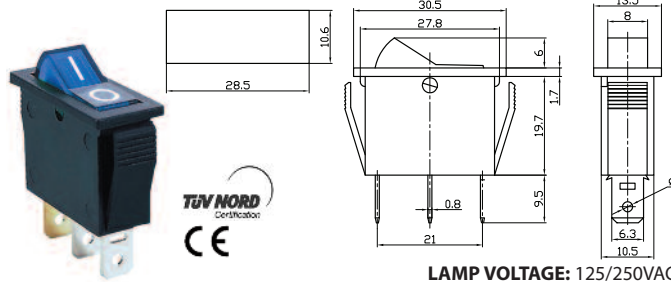
PART #	DESCRIPTION	RATING B
66-2820	ON-ON/SPDT	10 AMPS/12VDC

ILLUMINATED ROCKER SWITCH



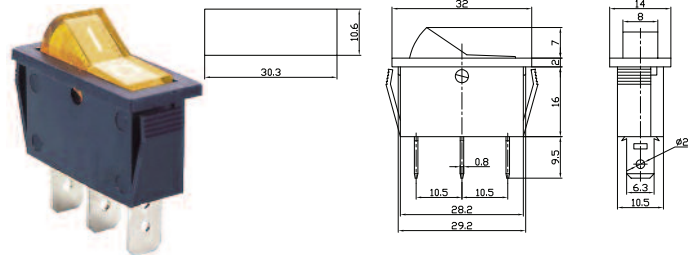
PART #	DESCRIPTION	RATING A	LAMP VOLTAGE
66-2237 AMBER	ON-OFF/SPST 3P	20 AMPS/12VDC	12VDC
66-2238 BLUE	ON-OFF/SPST 3P	20 AMPS/12VDC	12VDC
66-2239 GREEN	ON-OFF/SPST 3P	20 AMPS/12VDC	12VDC
66-2240 RED	ON-OFF/SPST 3P	20 AMPS/12VDC	12VDC

ILLUMINATED ROCKER SWITCH



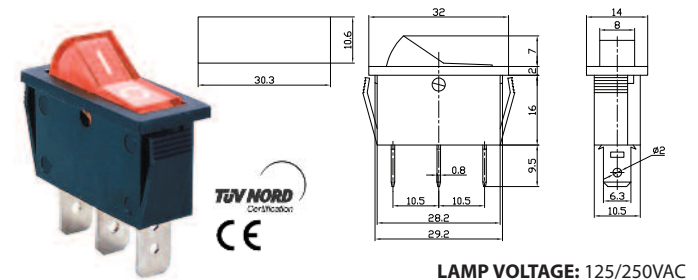
PART #	DESCRIPTION	RATING A	RATING B
66-2217 AMBER	ON-OFF/SPST 3P	20 AMPS/125VAC	15 AMPS/250VAC
66-2218 BLUE	ON-OFF/SPST 3P	20 AMPS/125VAC	15 AMPS/250VAC
66-2219 GREEN	ON-OFF/SPST 3P	20 AMPS/125VAC	15 AMPS/250VAC
66-2220 RED	ON-OFF/SPST 3P	20 AMPS/125VAC	15 AMPS/250VAC

ILLUMINATED ROCKER SWITCH



PART #	DESCRIPTION	RATING A	LAMP VOLTAGE
66-2207 AMBER	ON-OFF/SPST 3P	20 AMPS/12VDC	12VDC
66-2208 BLUE	ON-OFF/SPST 3P	20 AMPS/12VDC	12VDC
66-2209 GREEN	ON-OFF/SPST 3P	20 AMPS/12VDC	12VDC
66-2210 RED	ON-OFF/SPST 3P	20 AMPS/12VDC	12VDC

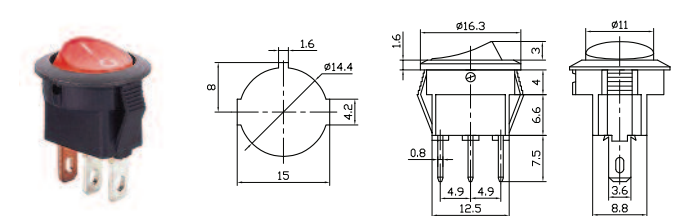
ILLUMINATED ROCKER SWITCH



LAMP VOLTAGE: 125/250VAC

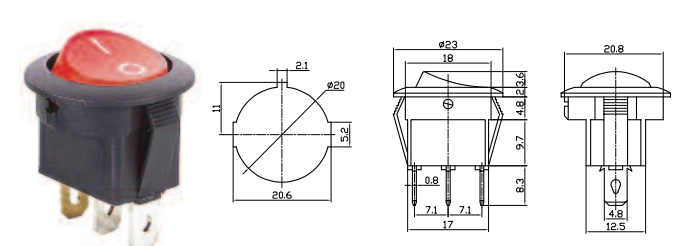
PART #	DESCRIPTION	RATING A	RATING B
66-2200 AMBER	ON-OFF/SPST 3P	20 AMPS/125VAC	15 AMPS/250VAC
66-2201 BLUE	ON-OFF/SPST 3P	20 AMPS/125VAC	15 AMPS/250VAC
66-2202 GREEN	ON-OFF/SPST 3P	20 AMPS/125VAC	15 AMPS/250VAC
66-2203 RED	ON-OFF/SPST 3P	20 AMPS/125VAC	15 AMPS/250VAC

ILLUMINATED MINI ROCKER SWITCH



PART #	DESCRIPTION	RATING A	RATING B
66-2290 RED	ON-OFF/SPST 3P	6 AMPS/12VDC	—
66-2293 RED	ON-OFF/SPST 3P	3 AMPS/125 VAC	1 AMP/250 VAC

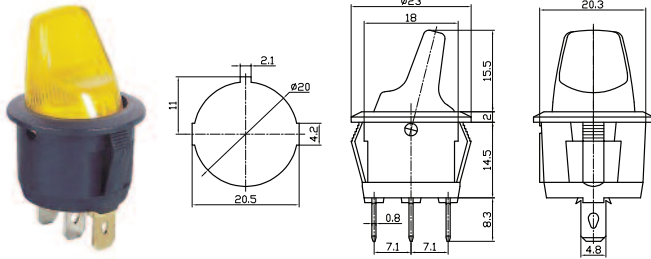
ILLUMINATED ROCKER SWITCH



PART #	DESCRIPTION	RATING A	RATING B
66-2291 RED	ON-OFF/SPST 3P	16 AMPS/12VDC	—
66-2292 RED	ON-OFF/SPST 3P	13 AMPS/125 VAC	6.5 AMP/250 VAC

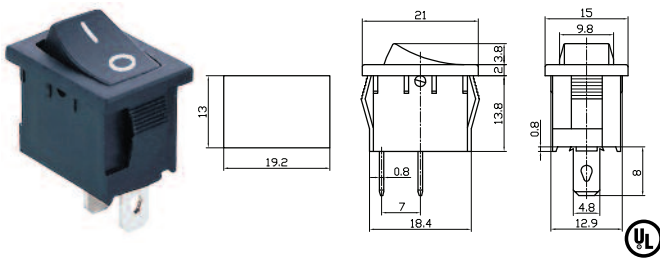
SWITCHES

ILLUMINATED ROCKER SWITCH



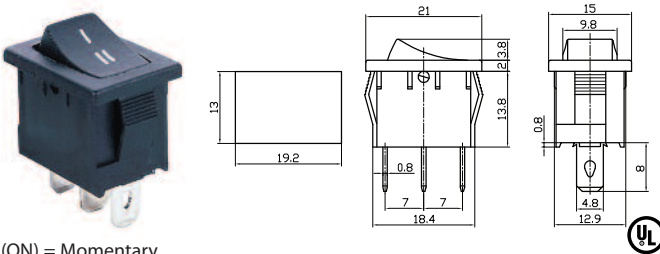
PART #	DESCRIPTION	RATING A	LAMP VOLTAGE
66-2040 AMBER	ON-OFF/SPST 3P	20 AMPS/12VDC	12VDC
66-2041 BLUE	ON-OFF/SPST 3P	20 AMPS/12VDC	12VDC
66-2042 GREEN	ON-OFF/SPST 3P	20 AMPS/12VDC	12VDC
66-2043 RED	ON-OFF/SPST 3P	20 AMPS/12VDC	12VDC

ROCKER SWITCH



PART #	DESCRIPTION	RATING A	RATING B
66-2245	ON-OFF/SPST 2P	10 AMPS/125 VAC	6 AMPS/250 VAC

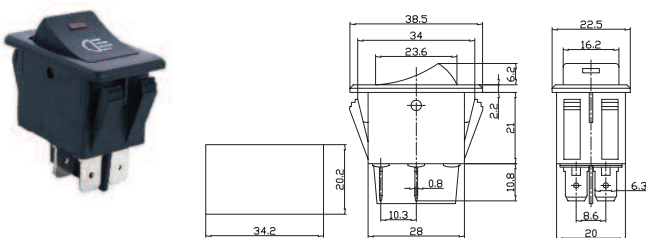
ROCKER SWITCH



(ON) = Momentary

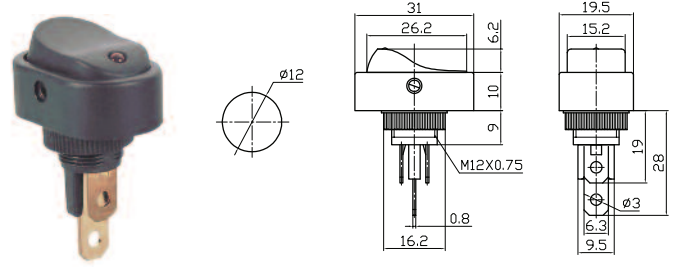
PART #	DESCRIPTION	RATING A	RATING B
66-2246	ON-ON/SPDT 3P	10 AMPS/125VAC	6 AMPS/250VAC
66-2247	ON-OFF-ON/SPDT 3P	10 AMPS/125VAC	6 AMPS/250VAC
66-2248	(ON)-OFF-(ON)/SPDT 3P	10 AMPS/125VAC	6 AMPS/250VAC

ILLUMINATED AUTOMOTIVE SWITCH



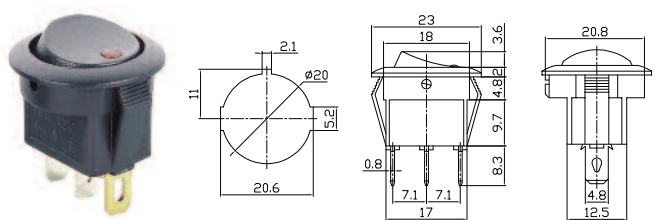
PART #	DESCRIPTION	RATING A
66-2294 AMBER	ON-OFF/DPST 4P	35 AMPS/12 VDC (WITH LAMP)
66-2295 RED	ON-OFF/DPST 4P	35 AMPS/12 VDC (WITH LAMP)
66-2296 BLUE	ON-OFF/DPST 4P	35 AMPS/12 VDC (WITH LAMP)
66-2297 GREEN	ON-OFF/DPST 4P	35 AMPS/12 VDC (WITH LAMP)

ILLUMINATED LED AUTOMOTIVE SWITCH



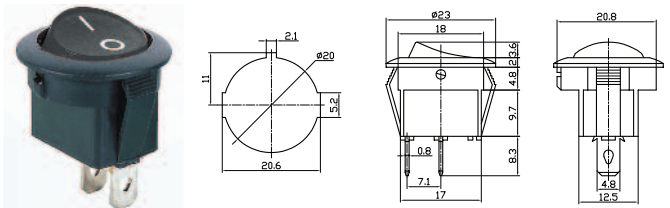
PART #	DESCRIPTION	RATING A	LAMP VOLTAGE
66-2280 AMBER	ON-OFF/SPST 3P	16 AMPS/12VDC	12VDC
66-2281 BLUE	ON-OFF/SPST 3P	16 AMPS/12VDC	12VDC
66-2282 GREEN	ON-OFF/SPST 3P	16 AMPS/12VDC	12VDC
66-2283 RED	ON-OFF/SPST 3P	16 AMPS/12VDC	12VDC

ILLUMINATED LED AUTOMOTIVE SWITCH



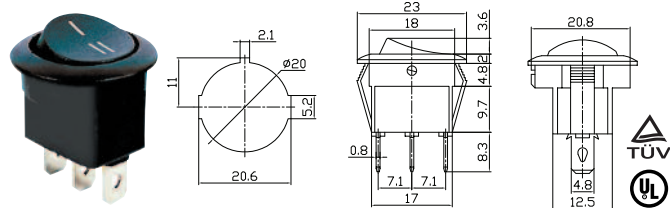
PART #	DESCRIPTION	RATING A	LAMP VOLTAGE
66-2285 AMBER	ON-OFF/SPST 3P	16 AMPS/12VDC	12VDC
66-2286BLUE	ON-OFF/SPST 3P	16 AMPS/12VDC	12VDC
66-2287 GREEN	ON-OFF/SPST 3P	16 AMPS/12VDC	12VDC
66-2288 RED	ON-OFF/SPST 3P	16 AMPS/12VDC	12VDC

AUTOMOTIVE SWITCH



PART #	DESCRIPTION	RATING A	RATING B
66-2255	ON-OFF/SPST 2P	16 AMPS/12 VDC	10 AMPS/125 VAC

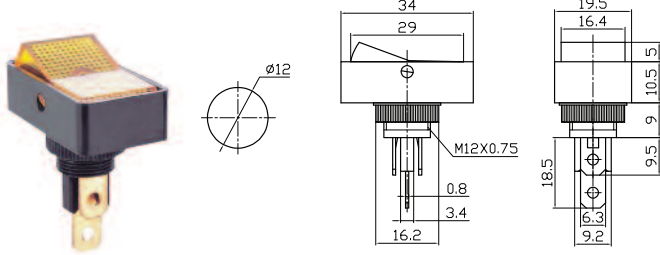
AUTOMOTIVE SWITCH



PART #	DESCRIPTION	RATING A	RATING B
66-2256	ON-ON/SPDT 3P	13 AMPS/12VDC	10 AMP/125 VAC
66-2257	ON-OFF-ON/SPDT 3P	13 AMPS/12VDC	10 AMP/125 VAC

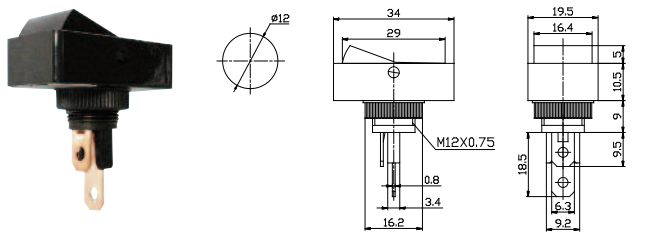


ILLUMINATED AUTOMOTIVE SWITCH



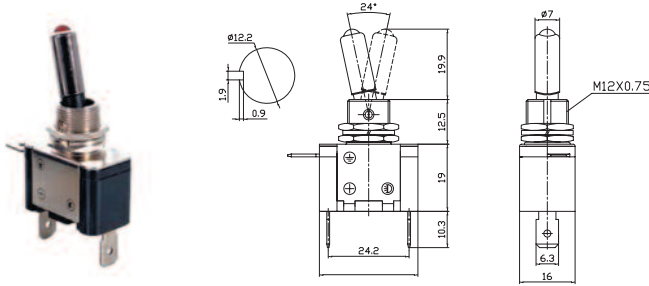
PART #	DESCRIPTION	RATING A	LAMP VOLTAGE
66-2271 AMBER	ON-OFF/SPST 3P	20 AMPS/12VDC	12VDC
66-2272 BLUE	ON-OFF/SPST 3P	20 AMPS/12VDC	12VDC
66-2273 GREEN	ON-OFF/SPST 3P	20 AMPS/12VDC	12VDC
66-2274 RED	ON-OFF/SPST 3P	20 AMPS/12VDC	12VDC

AUTOMOTIVE SWITCH



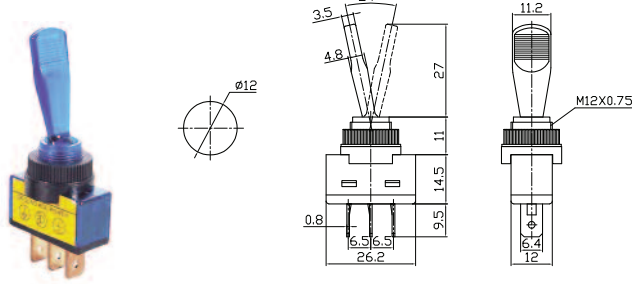
PART #	DESCRIPTION	RATING A	RATING B
66-2276	ON-OFF/SPST 2P	20 AMPS/12VDC	10 AMP/125 VAC

ILLUMINATED AUTOMOTIVE SWITCH



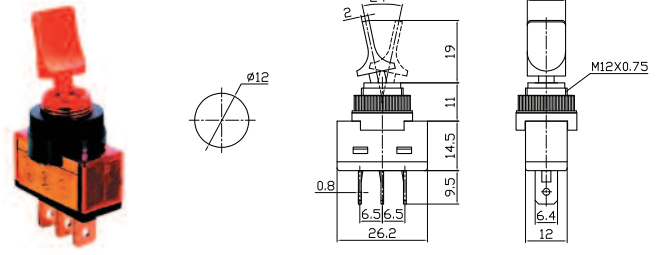
PART #	DESCRIPTION	RATING A
66-2050 RED	ON-OFF/SPST 3P	25 AMPS/12 VDC (WITH LAMP)
66-2051 BLUE	ON-OFF/SPST 3P	25 AMPS/12 VDC (WITH LAMP)
66-2052 GREEN	ON-OFF/SPST 3P	25 AMPS/12 VDC (WITH LAMP)
66-2053 AMBER	ON-OFF/SPST 3P	25 AMPS/12 VDC (WITH LAMP)

ILLUMINATED AUTOMOTIVE SWITCH



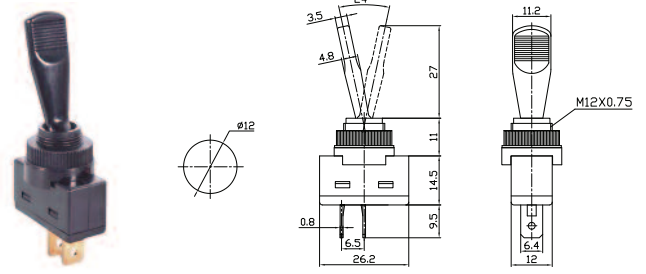
PART #	DESCRIPTION	RATING A	LAMP VOLTAGE
66-2022 AMBER	ON-OFF/SPST 3P	20 AMPS/12VDC	12VDC
66-2012 BLUE	ON-OFF/SPST 3P	20 AMPS/12VDC	12VDC
66-2032 GREEN	ON-OFF/SPST 3P	20 AMPS/12VDC	12VDC
66-2002 RED	ON-OFF/SPST 3P	20 AMPS/12VDC	12VDC

ILLUMINATED AUTOMOTIVE SWITCH



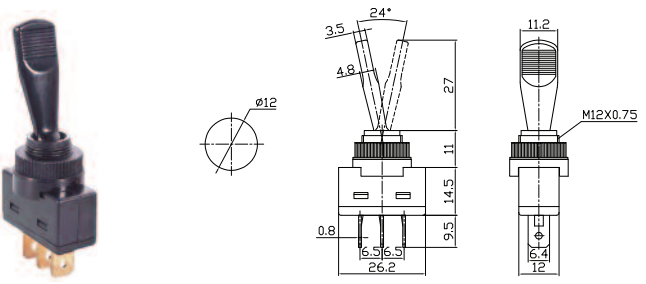
PART #	DESCRIPTION	RATING A	LAMP VOLTAGE
66-2035 AMBER	ON-OFF/SPST 3P	20 AMPS/12VDC	12VDC
66-2036 BLUE	ON-OFF/SPST 3P	20 AMPS/12VDC	12VDC
66-2037 GREEN	ON-OFF/SPST 3P	20 AMPS/12VDC	12VDC
66-2038 RED	ON-OFF/SPST 3P	20 AMPS/12VDC	12VDC

AUTOMOTIVE SWITCH



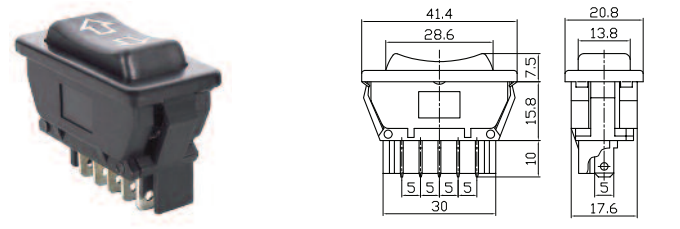
PART #	DESCRIPTION	RATING A	RATING B
66-2023	ON-OFF/SPST 2P	20 AMPS/12 VDC	10 AMPS/125 VAC

AUTOMOTIVE SWITCH



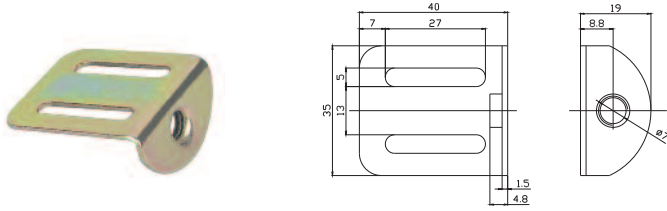
PART #	DESCRIPTION	RATING A	RATING B
66-2024	ON-ON/SPDT 3P	20 AMPS/12VDC	10 AMPS/125 VAC
66-2025	ON-OFF-ON/SPDT 3P	20 AMPS/12VDC	10 AMPS/125 VAC

AUTOMOTIVE SWITCH



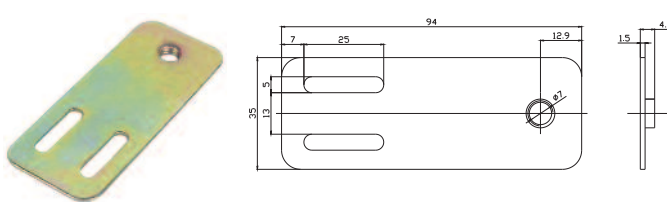
PART #	DESCRIPTION	RATING A	RATING B
66-2298	DPDT 5P	20 AMPS/12 VDC	10 AMPS/30 VDC

PIN SWITCH BRACKET- RIGHT ANGLE



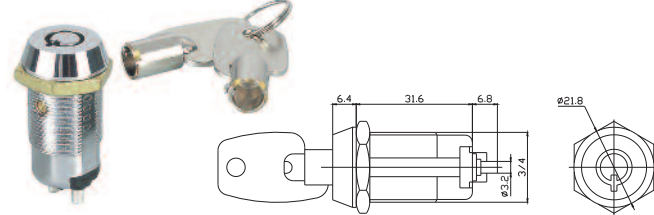
PART #	DESCRIPTION
66-5005	18G. BRACKET, .25" THREADED HOLE, 1.125" ADJUSTMENT SLOT

PIN SWITCH BRACKET



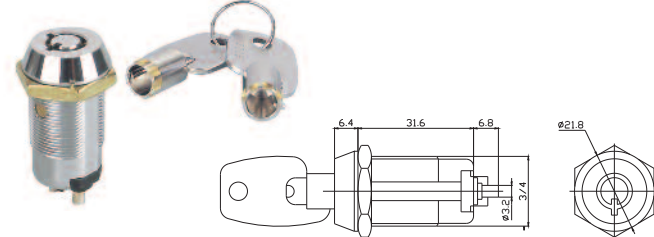
PART #	DESCRIPTION
66-5006	18G. BRACKET, .25" THREADED HOLE, 1.125" ADJUSTMENT SLOT

KEY SWITCH



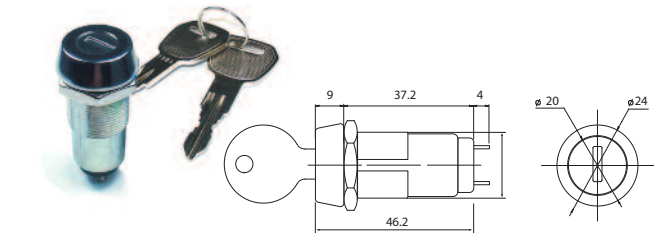
PART #	DESCRIPTION
66-2802	SPST ON-OFF ROUND KEY SWITCH

KEY SWITCH



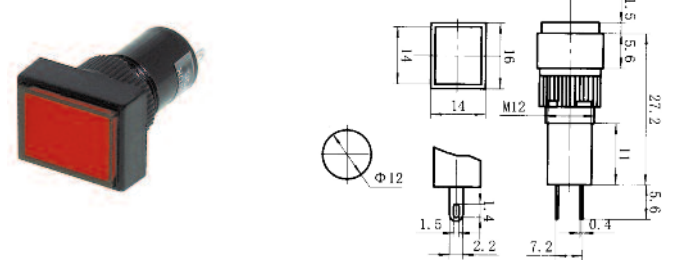
PART #	DESCRIPTION
66-2804	MOMENTARY (ON) ROUND KEY SWITCH

KEY SWITCH



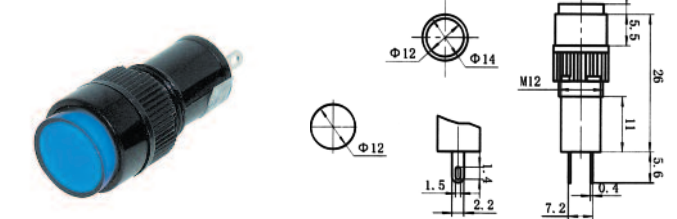
PART #	DESCRIPTION
66-2808	SPST ON-OFF FLAT KEY SWITCH

RECTANGLE ILLUMINATED PANEL LAMPS



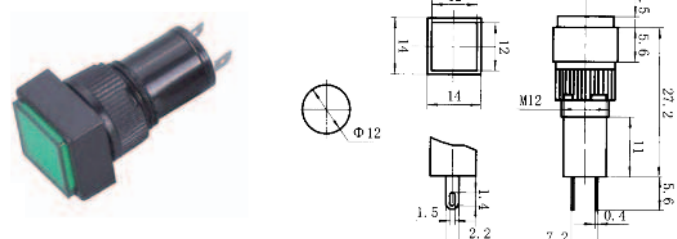
PART #	DESCRIPTION	VOLTAGE
NN12RR	RED PANEL LAMP 12mmØ	3-12VDC
NN12RBL	BLUE PANEL LAMP 12mmØ	3-12VDC
NN12RGR	GREEN PANEL LAMP 12mmØ	3-12VDC
NN12ROR	AMBER PANEL LAMP 12mmØ	3-12VDC

ROUND ILLUMINATED LED PANEL LAMPS



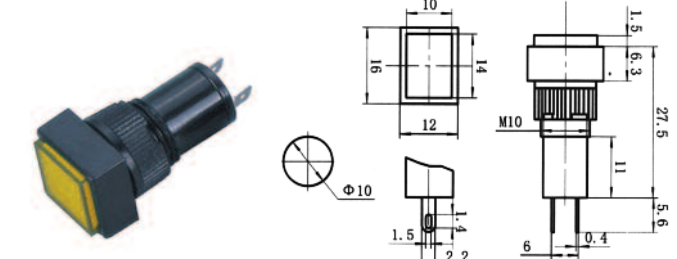
PART #	DESCRIPTION	VOLTAGE
NN12CR	RED PANEL LAMP 12mmØ	3-12VDC
NN12CBL	BLUE PANEL LAMP 12mmØ	3-12VDC
NN12CGR	GREEN PANEL LAMP 12mmØ	3-12VDC
NN12COR	AMBER PANEL LAMP 12mmØ	3-12VDC

SQUARE ILLUMINATED LED PANEL LAMPS



PART #	DESCRIPTION	VOLTAGE
NN12SR	RED PANEL LAMP 12mmØ	3-12VDC
NN12SBL	BLUE PANEL LAMP 12mmØ	3-12VDC
NN12SGR	GREEN PANEL LAMP 12mmØ	3-12VDC
NN12SOR	AMBER PANEL LAMP 12mmØ	3-12VDC

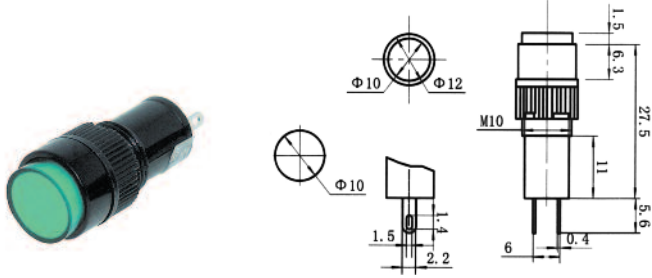
RECTANGLE ILLUMINATED PANEL LAMPS



PART #	DESCRIPTION	VOLTAGE
NN10RR	RED PANEL LAMP 10mmØ	3-12VDC
NN10RBL	BLUE PANEL LAMP 10mmØ	3-12VDC
NN10RGR	GREEN PANEL LAMP 10mmØ	3-12VDC
NN10ROR	AMBER PANEL LAMP 10mmØ	3-12VDC

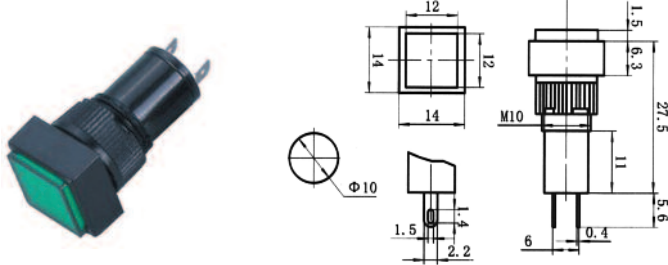
SWITCHES

ROUND ILLUMINATED LED PANEL LAMPS



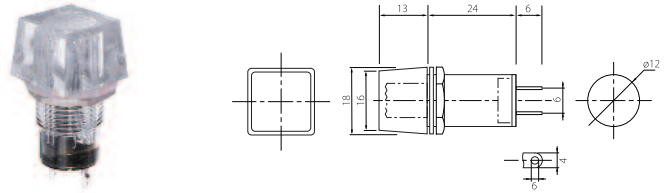
PART #	DESCRIPTION	VOLTAGE
NN10CR	RED PANEL LAMP 10mmØ	3-12VDC
NN10CBL	BLUE PANEL LAMP 10mmØ	3-12VDC
NN10CGR	GREEN PANEL LAMP 10mmØ	3-12VDC
NN10COR	AMBER PANEL LAMP 10mmØ	3-12VDC

SQUARE ILLUMINATED LED PANEL LAMPS



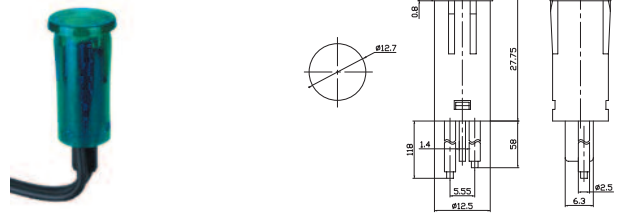
PART #	DESCRIPTION	VOLTAGE
NN10SR	RED PANEL LAMP 10mmØ	3-12VDC
NN10SBL	BLUE PANEL LAMP 10mmØ	3-12VDC
NN10SGR	GREEN PANEL LAMP 10mmØ	3-12VDC
NN10SOR	AMBER PANEL LAMP 10mmØ	3-12VDC

SQUARE ILLUMINATED LAMP



PART #	DESCRIPTION	VOLTAGE
N799PA	AMBER Panel Lamp 12mmØ	12VDC
N799PBL	BLUE Panel Lamp 12mmØ	12VDC
N799PC	CLEAR Panel Lamp 12mmØ	12VDC
N799PG	GREEN Panel Lamp 12mmØ	12VDC
N799PR	RED Panel Lamp 12mmØ	12VDC

ROUND ILLUMINATED LAMP



PART #	DESCRIPTION	VOLTAGE
N599PR	RED Panel lamp with leads 12.7mmØ	12VDC
N599PBL	BLUE Panel lamp with leads 12.7mmØ	12VDC
N599PG	GREEN Panel lamp with leads 12.7mmØ	12VDC
N599PA	AMBER Panel lamp with leads 12.7mmØ	12VDC
N699PR	RED Panel lamp with leads 12.7mmØ	120VAC
N699PBL	BLUE Panel lamp with leads 12.7mmØ	120VAC
N699PG	GREEN Panel lamp with leads 12.7mmØ	120VAC
N699PA	AMBER Panel lamp with leads 12.7mmØ	120VAC