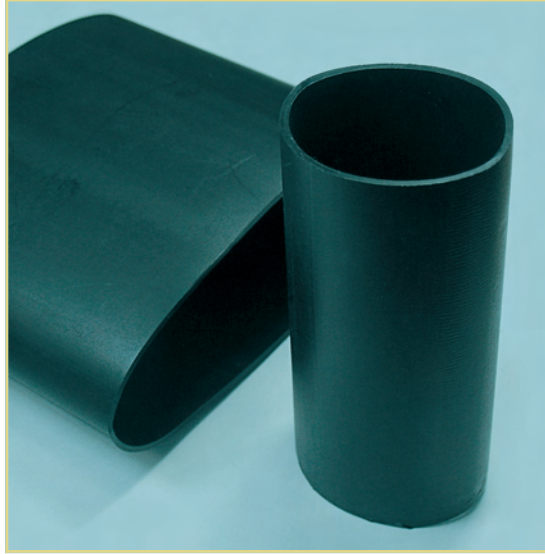


HEAT SHRINK
TUBING AND
CABLE SLEEVING



PRODUCT OVERVIEW

Our tubing is manufactured in some of the most modern facilities and under strict quality control to provide you with tubing that meets the standards your project requires. With an extensive selection of material characteristics to choose from, our

overview aims at providing you with the information that will facilitate your initial evaluation process. Thermosleeve USA also has additional information for each product if you so require.

THERMOSLEEVE HEAT SHRINK & CABLE SLEEVING PRODUCTS

This is a quick overview of our tubing by categories. Our reference guides provide further details for each product.

SINGLE WALL

CBHFT600	CBHFT3X
CBHFT4X	CBHFT300
CBHFTYG	CBHFTLS
CBPET	CB1000
MTHX	MTTM
CBHRT	CBSRT-H
CBZHP300	CBZHP600

DUAL WALL

DWT2X/3X/4X	
DWT1000	DWTFR
DWT2000	DWTRX
DWT3000	DWTRO
DWT4000	DWTZHP2X
DWTZHP3X/4X	CATV

MWT	MWTA
HWT	HWT6X
HWTA	HWTA6X

MEDIUM & HEAVY WALL

EXTRUSION TUBING

PET	CB300PVC
CBTTT	CB600PVC
CBTTL	CBTTS
CBTTS	CBSGS
CBSRS	CBSRT
CB300PE	CB600PE
MTTAG	

SINGLE WALL SPECIALTY HEAT SHRINK

FKM	RSF
PTFE	DR
DS406	OFS
KT	BT1T/10M
KYNAR150/175	
HSSS	

STANDARD EXPANDABLE SLEEVING

FR	HFR
FRH	PPS
PA	PAM

FRLPET	PAF
CC	MCR
AFRS	SES
SS	NSSP
NSSN	CB
KL	BS
	NM

SPECIAL EXPANDABLE SLEEVING

INSULATING SLEEVING & TUBING

MFHG
MBWG
MXLG
MELG

CABLE WRAPS

SCS	SCW
PVTW	VCW
DHS	PZTW
ZW	SSCW
BWSPVC	

CABLE SLEEVING PRODUCT REFERENCE GUIDE

Part	Material	Standard Expan. Sleeving	Cable Wrap	Special Expan. Sleeving	Insulating Sleeving & Tubing	Operating Temperature	Melt Point	Flammability	Cold Cut	Hot Knife	UL	CSA	RoHS	Reach	PFOS	Halogen Free
FR	Polyester	●				-50°C~+150 °C	240 ±10 °C	VW-1		●	●		●	●		●
HFR	Polyester	●				-50°C~+150 °C	240 ±10 °C	UL94 V-0		●	●		●	●		●
FRH	Polyester	●				-50°C~+150 °C	240 ±10 °C	VW-1		●	●		●	●		●
PPS	Polyphenylene Sulfide	●				-70°C~+ 200°C	285°C±10 °C	UL 94V-0		●			●			
PA	Polyamide 6.6	●				-60°C~+160°C	256°C±5 °C	UL 94V-2		●			●	●		●
PAM	Polyamide 6	●				-60°C~+125°C	230 ±10 °C	UL 94V-2		●			●			
FRL-PET	Polyester	●				-50°C~+150°C	240 ±10 °C	VW-1		●	●		●	●		●
PAF	Polyamide 6.6			●		-60°C~+160°C	256°C±5 °C	UL 94V-2		●			●			
CC	Polyester			●		-50°C~+150°C	240 ±10 °C	VW-1		●	●		●			
MCR	Polyester			●		-50°C~+150°C	240 ±10 °C	-		●			●			●
AFRS	Aluminum Foil (outer layer) Fiberglass Sleeve (inner layer)			●			600°C ±20 °C	Self-extinguishing					●			
SES	Cooper Filament			●		-40°C~+150°C	-	-	●				●			
SS	Tinned Cooper			●		-60°C~+200°C	1084 °C	Self-extinguishing	●				●			
NSSP	Polyester Multifilament			●		-50°C~+150°C	240 ±10 °C	MSHA	●	●			●			
NSSN	Nylon Multifilament			●		-60°C~+125°C	230 ±10 °C	MSHA	●	●			●			
CB	Carbon Fiber			●		-269°C~+650°C		VW-1	●				●			
KL	Kevlar Fiber			●		-170°C~+250°C	does not melt	UL94V-0	shears				●			
BS	Basalt Fiber			●		-269°C~+650°C	1400 °C	UL94V-0	shears				●			
NM	Nomex Fiber			●		-196°C~+350°C	does not melt	UL94V-0	shears				●			●
MFHG	Ethylene Vinyl Acetate				●	-55°C~+105°C	-		heat-gun, oven				●			
MXLG	Modified Polypropylene			●		-40°C ~+105°C	-	-	●				●			
MELG	PE				●	- 40°C~+90°C	-	-	●				●			
MBWG	Steel/Polyvinyl Chloride				●	-10°C~+80°C	-	-	pliers				●			
SCS	Polyester Mono & Multifilament		●			-50°C~+150°C	240°C ±10°C	DIN5510, BS6853, EN45545					●			
SCW	Polyester		●			-50°C~+150°C	240°C ±10°C	UL94V-2	●	●			●			●
PVTW	Polyester		●			-50°C~+150°C	240°C ±10°C	VW-1		●			●			●
VCW	Polyester		●			-50°C~+150°C	240°C ±10°C	VW-1		●			●			
DHS	Polyester Multifilament		●			-50°C~+150°C	240°C ±10°C	VW-1					●			
PZTW	Polyester Multifilament		●			-50°C~+150°C	240°C ±10°C	VW-1					●			●
ZW	Polyester				●	-50°C~+150°C	240°C ±10°C	VW-1					●			●
SSCW	Polyester Mono & Multifilament		●			-50°C~+150°C	240°C ±10°C	VW-1		●			●			●
PVC	Coated Galvanized Steel Flexible Conduit		●			-15°C~+85°C	-	UL 94V-0	●				●			

12753 Moore St., Cerritos, CA 90703
Toll Free: 800-421-3536
Local: 562-404-9998
Fax: (562)404-9698
sales@thermosleeve-usa.com
www.thermosleeve-usa.com

CAGE CODE: 7EE56



RoHS



SAE
INTERNATIONAL

MIL

FMARK

